

PPC-100 Series of 100BaseTx/Fx Wireless Ethernet Bridge

ELVA's PPC-100 Series of mm-wave digital radios has been engineered for true Fast Ethernet 100Mbps LAN to LAN connectivity. This LAN bridge is IP-packet transparent wireless bridge that connects two or more Ethernet LAN segments and exploits point-to-point topology. The wireless link, based on PPC-100 radios, clearly passes all Ethernet protocols including IP, IPX, AppleTalk, etc.



Features

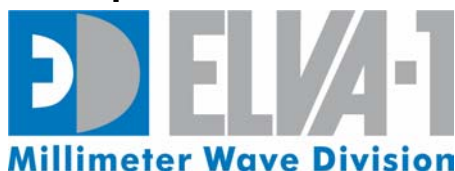
- Frequency bands:
40.5-43.5 GHz, 59-64 GHz, 71-76/81-86 GHz, 92-95 GHz
- Fast Ethernet Interface, High Bandwidth Throughput
- True Full Duplex Operation
- Solid reliability with Fiber-like Performance
- Distance Ranges of up to 10 miles (16km)*
- Easily Installed, Zero Maintenance
- Compact Cassegrain type antennas
- Quasi-optical propagation of mm-wave emission
- EMI Interference Free

* Distance range of 10 miles is achievable at clear weather conditions

Applications

- Point-to-point LAN/WAN Connectivity
- ISP Last Mile Connectivity
- FSO (Free Space Optics) Back-up at foggy regions
- Campus Area Networking
- Mesh and Multipoint Networking
- Secure Narrowbeam Communications

Description



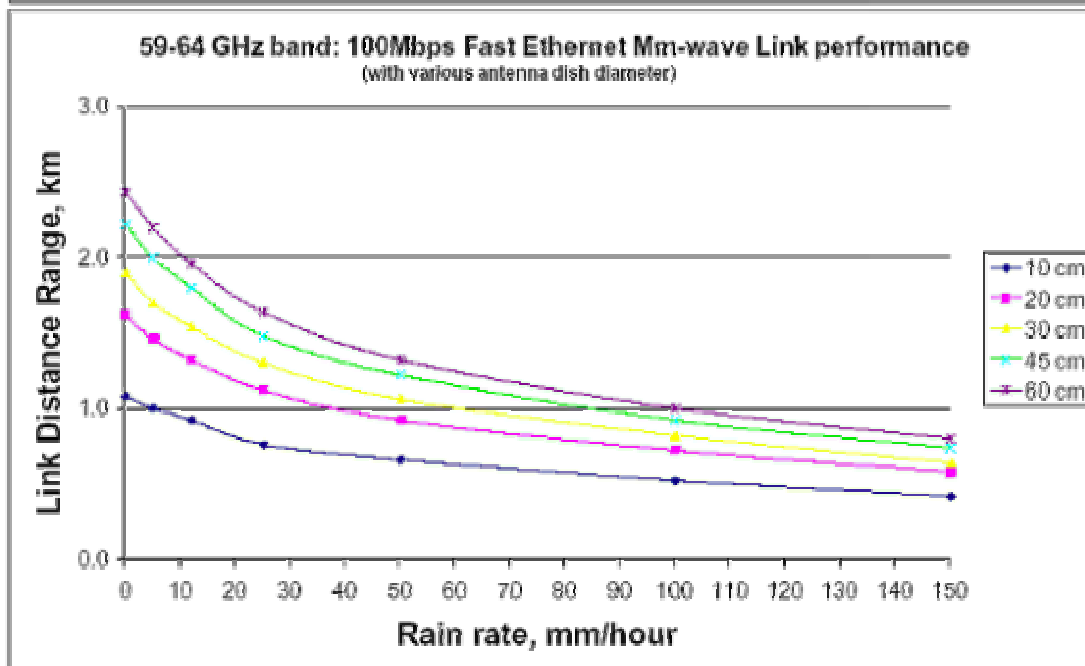
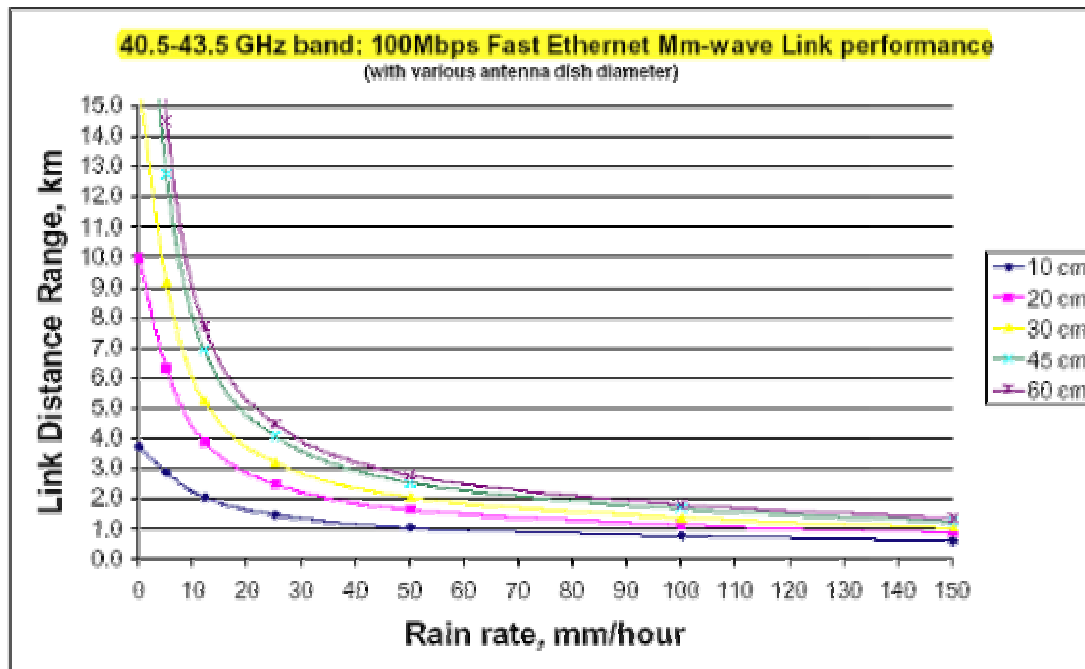
2 Voroshilova, 193318, St. Petersburg, Russia

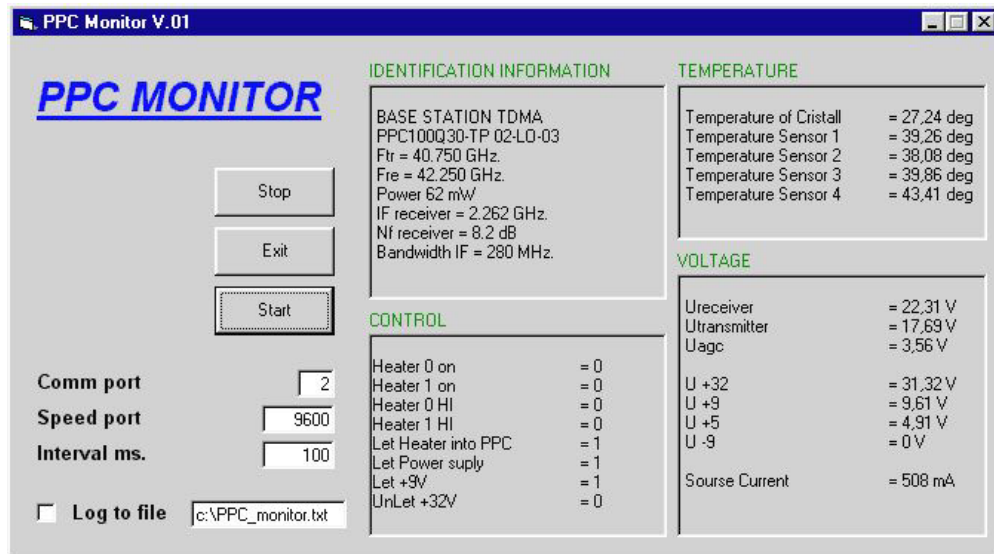
Tel: +7-812-326-5924, Fax: +7-812-326-1060

E-mail: sales@elva-1.com, <http://www.elva-1.com>

Local climatology defines link range

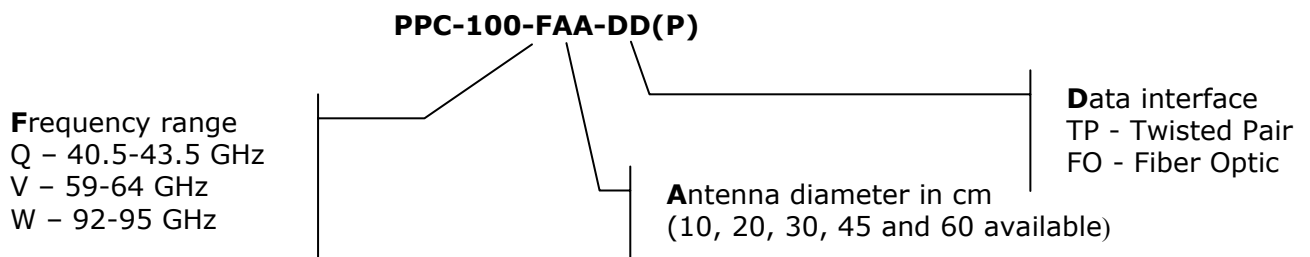
Link performance of millimeter wave line-of-sight systems is governed by the effects of local climatology and in particular precipitation, which usually includes rain but also other hydrometeors such as hail, fog, wet snow and sleet. On graphs below there are experiment-calculated dependences for rain intensity vs. attenuation for 10Mbps and 100Mbps point-to-point models at 40.5 - 43.5 GHz, 59 - 64 GHz and 92 - 96 GHz bands. These data allow network providers to optimize link range for districts with wet climate and steady rains.



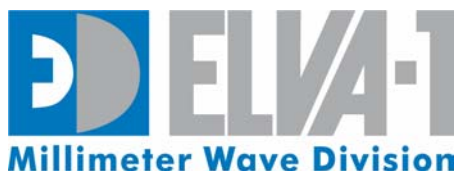


PPC Monitor is a software application that helps to remotely monitoring a number of physical parameters for any PPC radio. It delivers data from the radio to **RS-232** port. Using Windows Terminal service, an operator could check working capacity for all installed radios in the network from a central location. PPC Monitor app saves support personnel time and maintenance costs for network operator.

How to Order



Example: PPC-100-Q30-TP(P) – 100 Mbps full duplex Ethernet bridge operating in 40.5-43.5 GHz band with 30 cm antennas, twisted pair interface.



2 Voroshilova, 193318, St. Petersburg, Russia
 Tel: +7-812-326-5924, Fax: +7-812-326-1060
 E-mail: sales@elva-1.com, <http://www.elva-1.com>